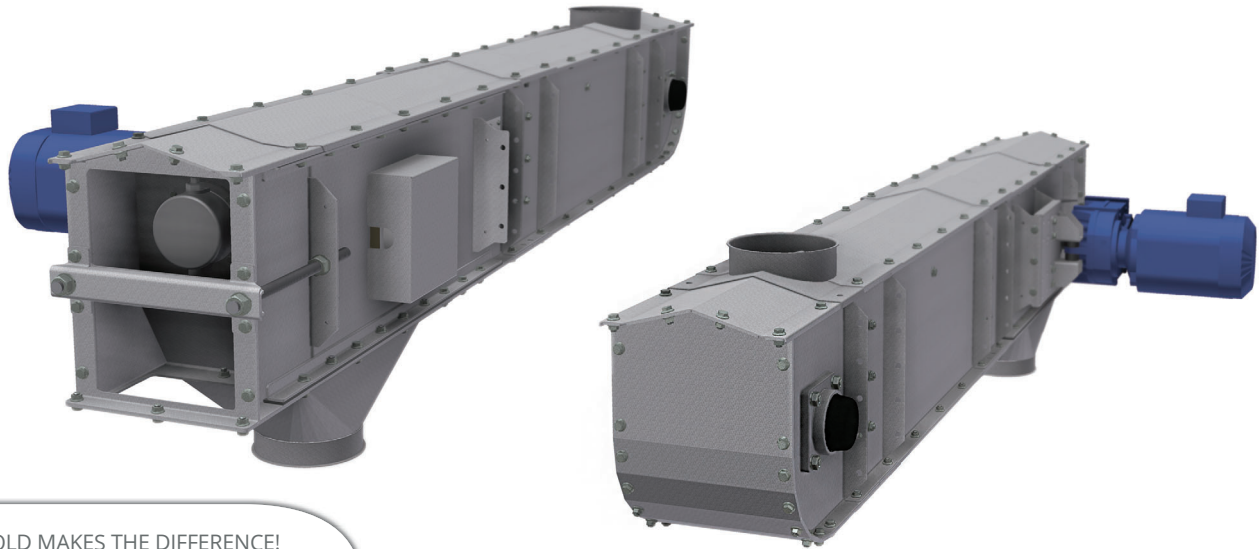




SKIOLD CHAIN CONVEYORS S



SKIOLD MAKES THE DIFFERENCE!

CHAIN CONVEYORS - DK190S/DK250S/DK320S/DK400S/DK500S

Horizontal conveying of grain, granulates, pellets and meal products

Capacity up to 475 m³/hour

Strong, galvanized construction

Shaft mounted helical geared motor

Combined drive/tension section

Round bottom in turning section minimizes residual products

Wide range of accessories

ATEX zone 22 approved



SKIOLDGROUP

SKIOLD CHAIN CONVEYORS S

The SKIOLD chain conveyors types S are designed for horizontal, high capacity conveying – up to 475 m³/h. The construction is completely enclosed and the flat bottom and rounded turning section secures very little material left over and thereby low contamination risk. The S series provides a reliable and low powered conveying of dry grain, granulates or feed products, i.e. ordinary, small-grained crops, meal and feed pellets. The product should have a maximum diameter of 16 mm and a maximum moisture content of approx. 25 %.

Modular construction

The construction of the chain conveyors is based on modular sections consisting of a combined driving and tension section and extension sections in lengths of 0.6, 1.0, 1.4, 2.0 and 2.4 m. Max length is up to 58 m. The modular sections system, also comprising the accessory programme, is easily assembled and flexible securing an optimum design and solution for your specific task.

Industrial design

As standard, the chain conveyors are supplied with 4 mm solid steel bottom plate with synthetic chain guide rail. Drive/ tension sections, turning sections and intermediate sections are manufactured of 3.0-4.0 mm galvanized steel plate and the roof shaped cover of 2.0 mm galvanized steel plate. The drive/ tension section is supplied with overflow membrane switch. As an optional extra, the chain conveyors can also be supplied with 10 mm thick PEHD non-friction bottom.

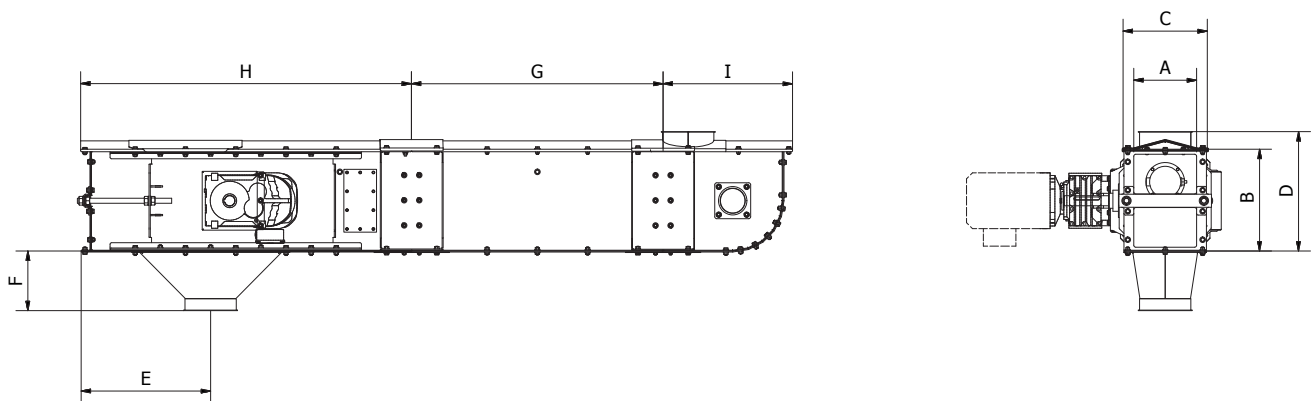
Shaft mounted geared motors

The SKIOLD chain conveyors come with shaft mounted helical- or bevel-helical geared motors ensuring a minimum of maintenance. The gear motors can be either right or left mounted, again securing a high degree of flexibility.

Accessory programme

In addition, a profound accessory programme is available comprising:

- Inlets and outlets in various sizes
- Inline outlet
- Inlet section for installation in intake hopper or silo bottom
- Motorized outlet slides with position indication
- Cleaning brush for intermediate outlet
- Capacity regulation
- Speed guard
- Adjustable – height and angle- support legs
- Reversible drive (up to 17 m)
- Intermediate bottom with raised lid
- Rain cap for motor (outdoor installation)
- Self-cleaning bottom



TECHNICAL SPECIFICATIONS

	Capacity m ³ /h	Motor kW	Chain speed m/s
DK190S	65	0.5 - 5.5	0.51
DK250S	117	2.2 - 11	0.52
DK320S	183	5.5 - 15	0.51
DK400S	256	7.5 - 22	0.48
DK500S	475	11-37	0.50

Capacity will vary for different products

MEASURE SKETCH

Dim. in mm	A	B	C	D	E	F	G	max	H	I
DK190S	190	338	275	394	523	246	55000	1325	485	
DK250S	250	403	335	475	515	235	55000	1317	515	
DK320S	320	463	405	548	515	235	50000	1317	568	
DK400S	400	550	485	615	515	235	50000	1317	668	
DK500S	500	704	590	813	615	211	50000	1317	688	